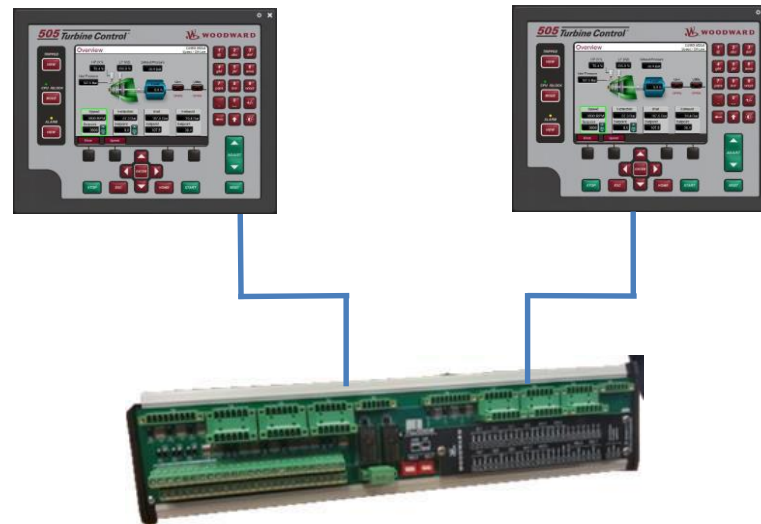


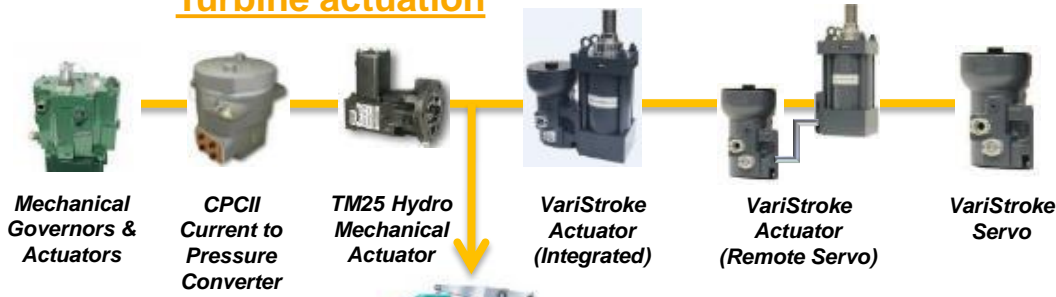
# WOODWARD FLEX 500DR & 505 DR

## REDUNDANTNÍ REGULÁTORY

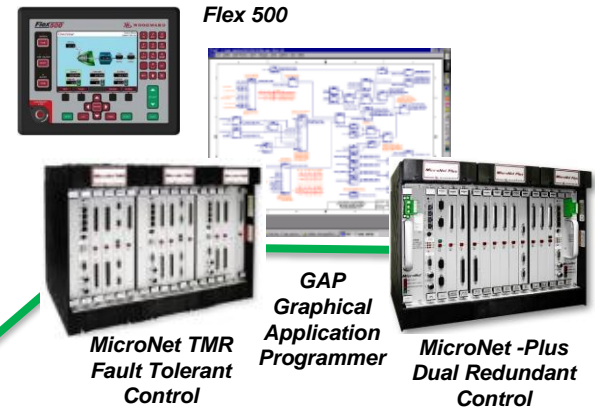


**Veinfurt s.r.o.**  
Houškova 31,  
32600 Plzeň  
Česká republika  
[www.veinfurt.eu](http://www.veinfurt.eu)

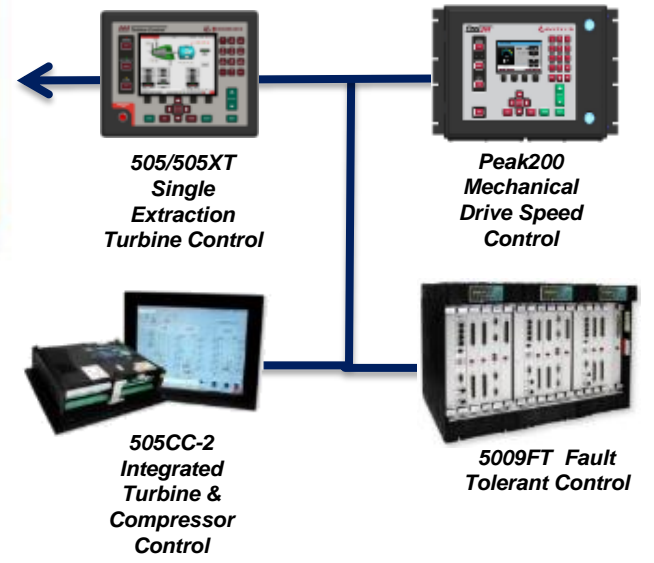
## Turbine actuation



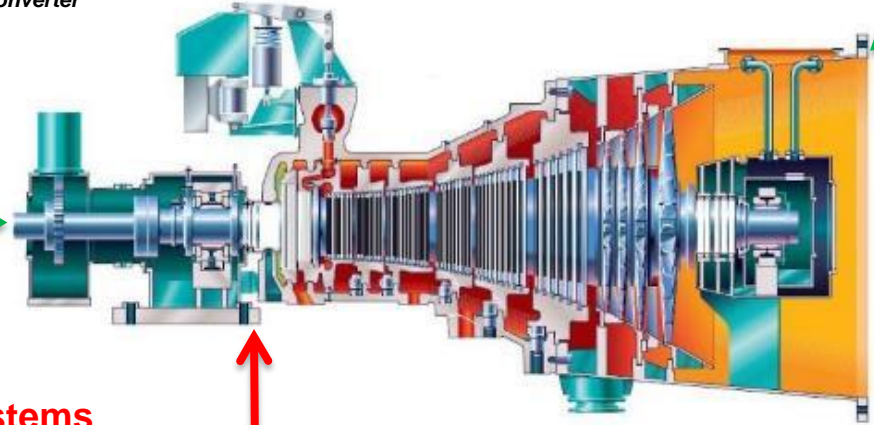
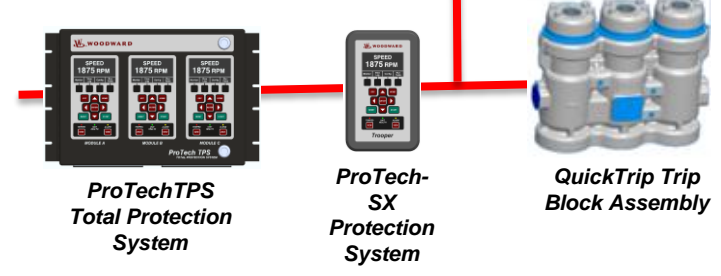
## Customized Turbine Controls



## Standard Configurable Controls

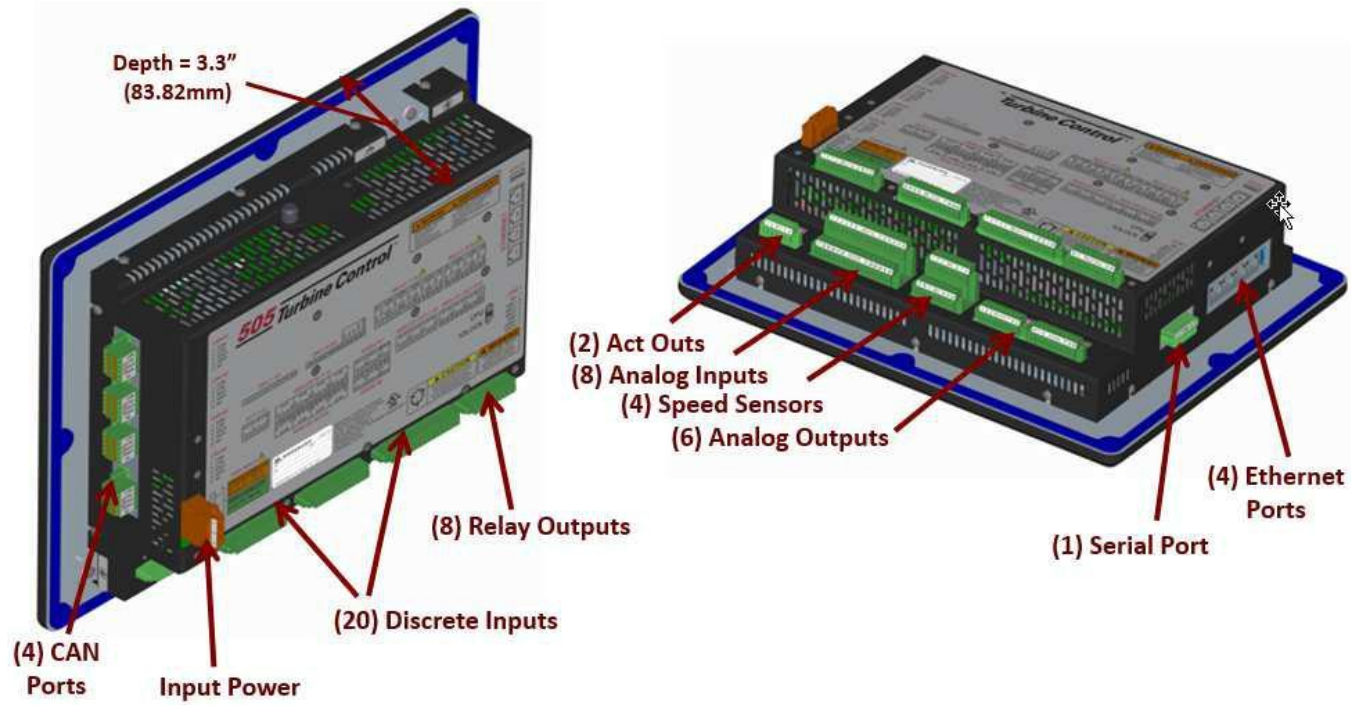


## Safety Systems



		Peak200	505D	505XT	Flex505	Flex500	505FT	5009FT	MicroNet
Turbine Type	Application								
		✓	✓	✓	✓	✓	✓	✓	✓
		✓ (Turbine Control Only)	✓ (Turbine Control Only)	✓ (Turbine Control Only)	✓	✓	✓ (Turbine Control Only)	✓ (Turbine Control Only)	✓
			✓	✓	✓	✓	✓	✓	✓
			✓ (Turbine Control Only)	✓ (Turbine Control Only)	✓	✓	✓ (Turbine Control Only)	✓ (Turbine Control Only)	✓
			✓	✓	✓	✓	✓	✓	✓
				✓ (Turbine Control Only)	✓	✓	✓ (Turbine Control Only)	✓ (Turbine Control Only)	✓
				✓	✓	✓	✓	✓	✓
						✓			✓
						✓			✓

## FLEX 500 DR & 505 DR



## FLEX 500 DR & 505 DR

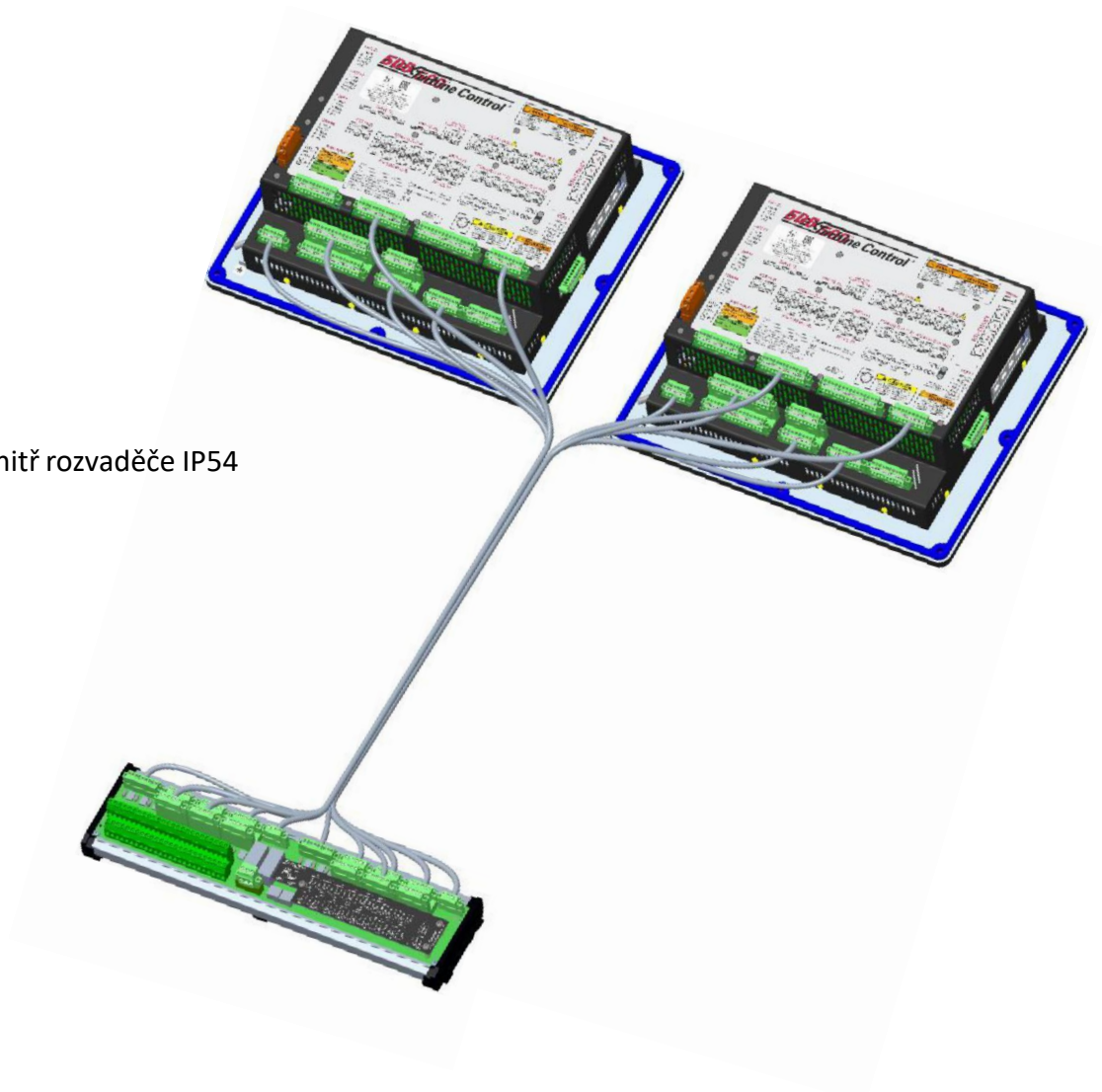
### Výhody

- CENOVĚ ATRAKTIVNÍ REDUNDANTNÍ REGULÁTOR
- PLNĚ REDUNDANTNÍ REGULÁTOR – včetně CPU, napájení, vstupů/výstupů = zvýšení spolehlivosti
- HW je založen na velmi oblíbené platformě 505XT
- Možnost opravy/výměny jednoho regulátoru „on line“
- Možnost „on line“ změn jako např. PID ladění, start sekvence aj
- Jeden regulátor „master“ (SYSCON), druhý pak záložní
- Oba čelní panely mohou zobrazovat různé funkce
- Jednotky jsou propojené přes Ethernet a prodrátované binární signály
- FTM modul provádí třídění I/O a umožňuje rychlejší a uživatelsky snadnou instalaci
- Jednoduchá konfigurace (505DR)
- Možnost rozšíření I/O omezeně u 505 DR, neomezeně pro Flex 500 DR
- Verze k montáži do rozvaděče do dvěří rozvaděče
- Verze s předním plně grafickým panelem nebo bez (Flex 500 DR)

## FLEX 500 DR & 505 DR

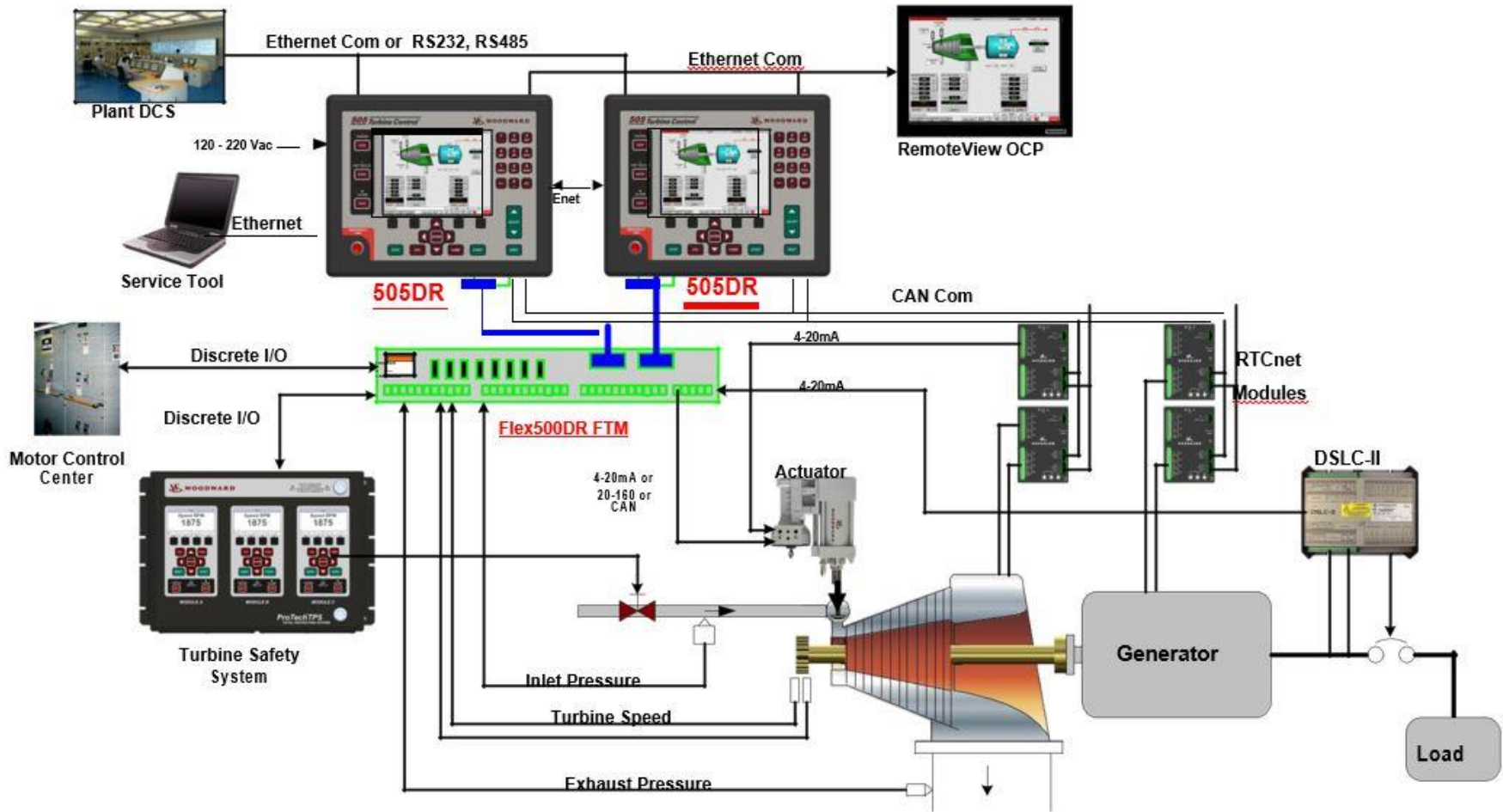
### FTM modul obsahuje:

- FTM modul
- Kabeláž mezi regulátory
- Kabeláž mezi FTM a regulátory
- FTM modul je navržen pro instalaci dovnitř rozvaděče IP54

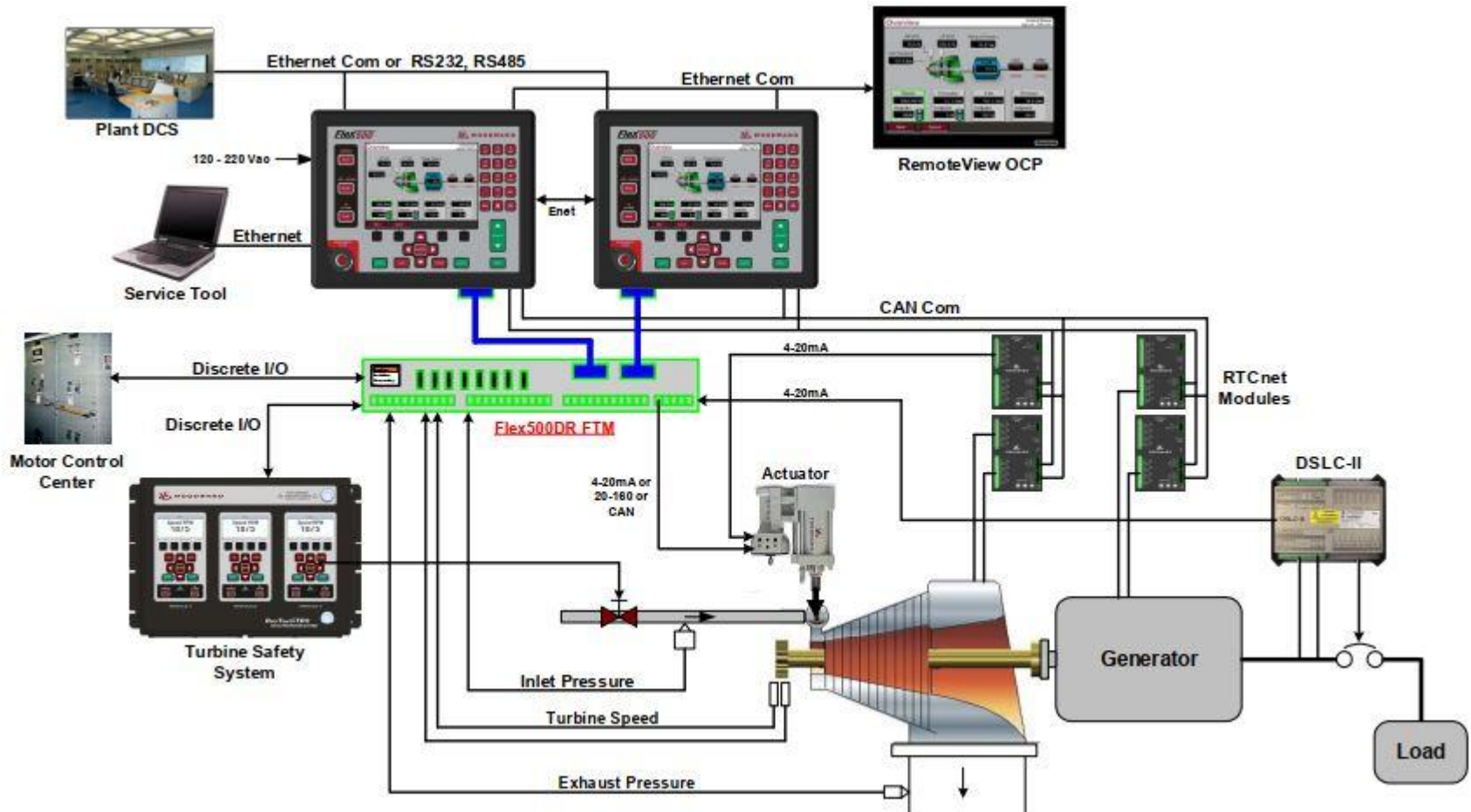




## FLEX 500 DR & 505 DR



## FLEX 500 DR & 505 DR





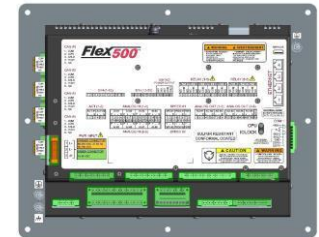
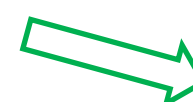
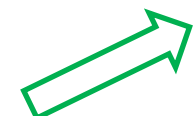
## FLEX 500 DR & 505 DR

### Flex 500 DR part numbers:

- 8200-1343 = Flex500 - Front Panel Mount – OPC, LV, Ordinary Location, Dual Redundant Enabled
- 8200-1344 = Flex500 - Front Panel Mount – OPC, HV Ordinary Location, Dual Redundant Enabled
- 8200-1353 = Flex500 - Back Panel Mount – LV, Ordinary Location, Dual Redundant Enabled
- 8200-1354 = Flex500 - Back Panel Mount – HV Ordinary Location, Dual Redundant Enabled

### Auxiliaries:

- 5541-705 = Optional Dual-Redundant FTM Kit
- 8928-810 = GAP Programming License
- 1796-3131 = CIS Subscription License (per year)
- 8928-5311 = RemoteView Software License
- 8200-1103 = RTCNet Analog 4-20 mA Module (8 AI and 2 AO)
- 8200-1100 = RTCNet RTD Module (8 RTD Inputs)
- 8200-1104 = RTCNet Discrete Input Module (16 Dis)
- 8200-1105 = RTCNet Discrete Output Module (16 DOs)



Control Interface Studio



Remote View



RTC Nets

## FLEX 500 DR & 505 DR

### 505 DR part numbers:

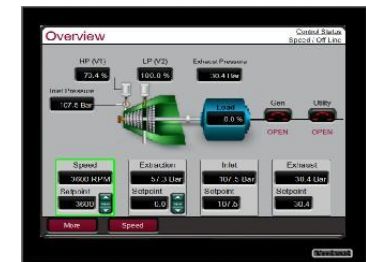
- 8200-1330 = 505DR - LV – Single Valve, Dual Valve, Single Ext, Expanded I/O
- 8200-1331 = 505DR - HV – Single Valve, Dual Valve, Single Ext, Expanded I/O



### Auxiliaries:

- 5541-705 = Optional Dual-Redundant FTM Kit
- 8200-227 = Servo Position Control (SPC) actuator driver module
- 8200-1103 = RTCNet Analog 4-20 mA Module (8 AI and 2 AO)
- 8200-1100 = RTCNet RTD Module (8 RTD Inputs)
- 8200-1104 = RTCNet Discrete Input Module (16 DIs)
- 8200-1105 = RTCNet Discrete Output Module (16 DOs)
- 8928-5311 = RemoteView Software License
- 8928-7482 = Vibration Sensor, Accelerometer
- SEC PN = Vibration Sensor, Proximity – Refer to SEC of America website

Optional DR FTM kit



Remote View



RTC Nets